

Community Liaison Group Meeting

July 2024

Agenda

- Terms of reference
- Introductions
- Project Update
 - Survey activity
 - Examination high level update with timeline
 - Outer Dowsing in the community

Local Design Panel

- The Design Review Process
- The Onshore Substation
- Design review elements
- Feedback from DRP
- Timeline & Next Steps
- Q&A

Terms of Reference and Aims

Our Aims ...

To involve key local stakeholders in the design and development of the Outer Dowsing Offshore Wind project (landfall, onshore cable route and substation) through presentations, discussions and planned workshop activities.

To act as a two-way communication channel between local communities and the project team.

To help foster local involvement and ownership of the project.

To facilitate focused discussions and ensure attendees can make the most out of the CLG's – it is intended for these groups to be focused on concerns/ issues / thoughts relative to their specific **local area**.



Approval of previous minutes



Any comments or queries prior to the meeting?

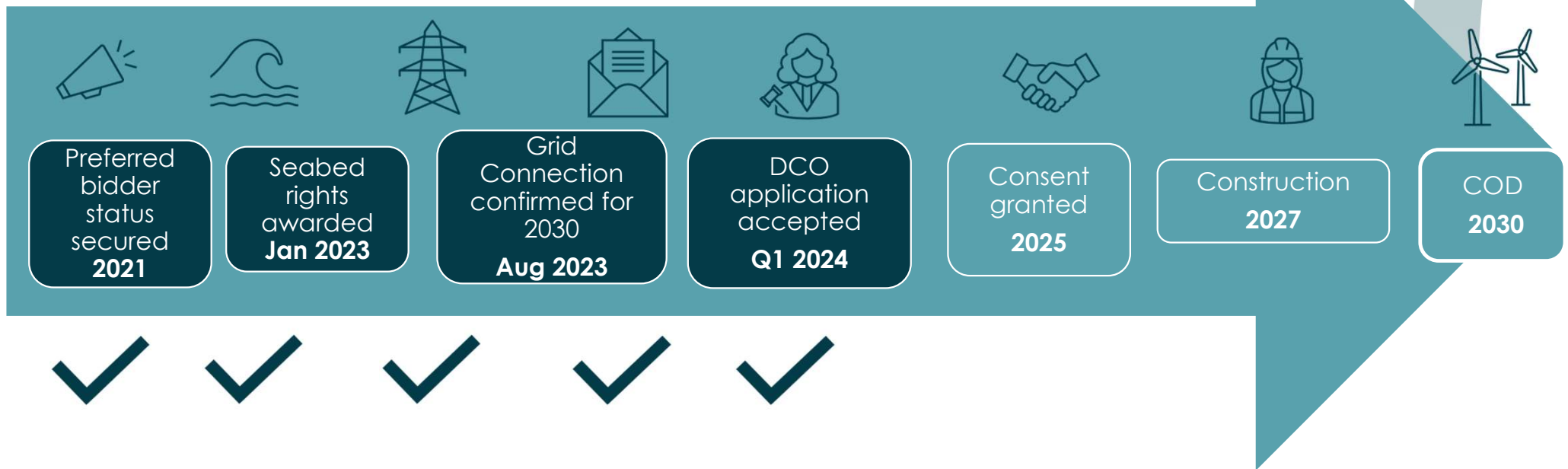


Declaration of Conflicts of Interests.

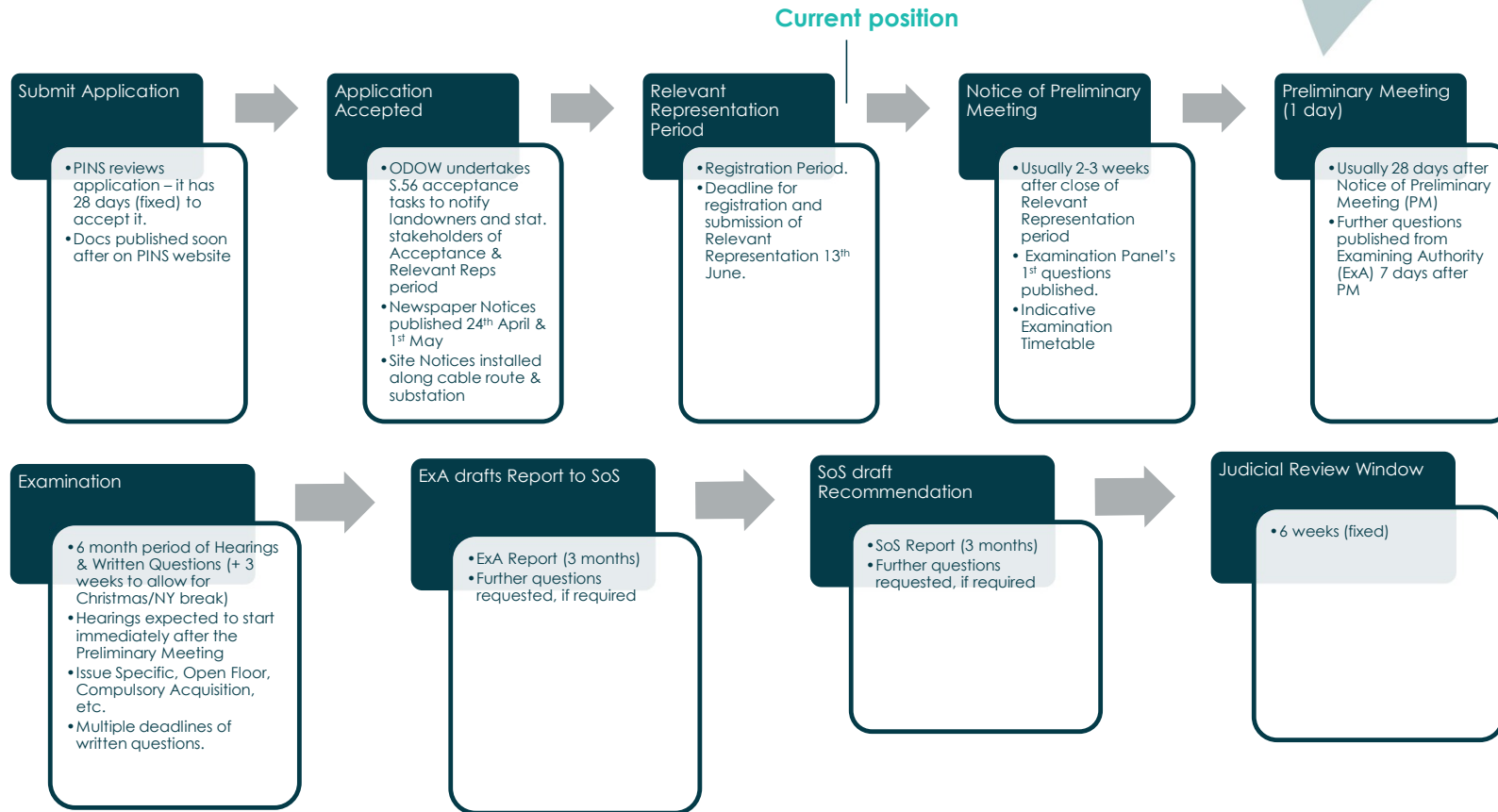


Project Update

Project Timeline



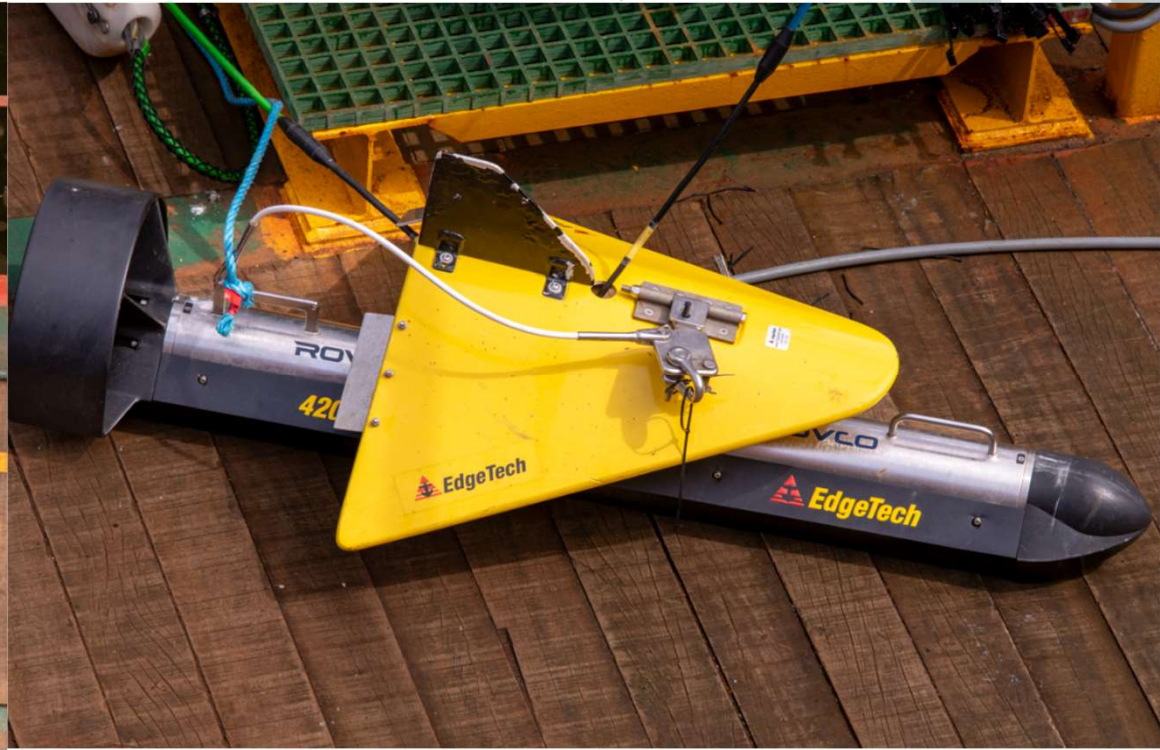
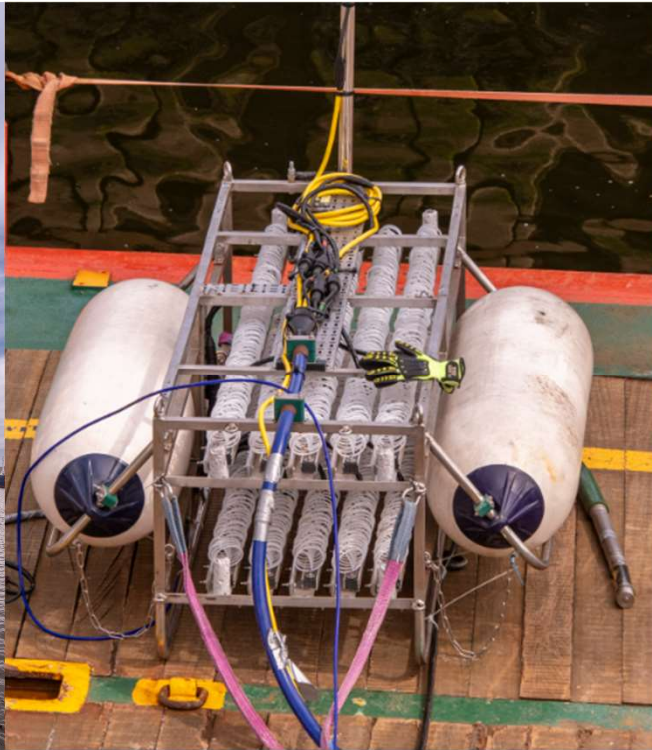
DCO Examination Process – DCO accepted on 16th April



Survey update

Activity	Location	Timing and Duration
Offshore geophysical surveys	Various offshore locations	July until later in the year
Onshore geophysical site investigations	Lincolnshire fields	Completed in June
Onshore geotechnical boreholes and trial pits	Lincolnshire fields	Completed in May
Nearshore Geotechnical works (seabed survey)	Off the coast from Anderby Creek	Due for completion by end of July
Onshore Archaeology Excavation	Lincolnshire fields	July - September

Offshore Geophysical, Environmental & Geotechnical Surveys 2024



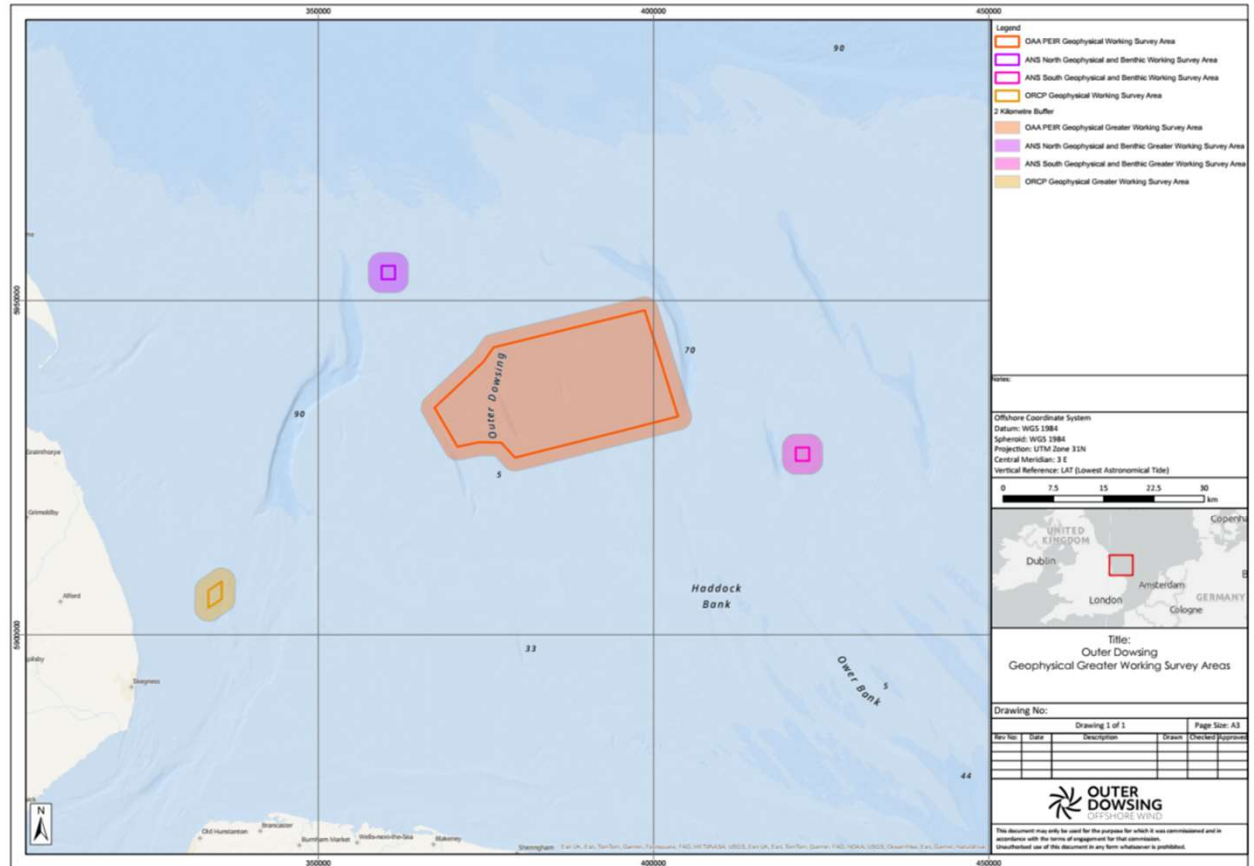
Offshore Geophysical & Environmental Surveys 2024

Offshore Geophysical Survey 2024

Outer Dowsing Offshore Wind (a joint venture between TotalEnergies, Corio Generation and Gulf Energy) are conducting a 2 month offshore geophysical survey between 27th May and 18th July 2024 using the vessel *Glomar Supporter* call sign: HOAL. The survey vessel shall at times be towing a cable up to approximately 100m behind the vessel (the end marked by a tail buoy) at depths of up to 3m below sea level. The survey vessel shall have limited maneuverability so please allow a safe distance. The survey vessel is also accompanied by a Guard / Scout vessel.

Company: Outer Dowsing Offshore Wind
 Contractor: ROVCO Limited
 Survey Vessel: Glomar Supporter
 Survey Vessel call sign: HOAL
 Earliest Start date: 27th May 2024
 Latest Finish date: 18th July 2024

Company: Outer Dowsing Offshore Wind
 Contractor: NFFO Services Limited
 Guard/Scout Vessel: Atlas WY170
 Guard Scout Vessel call sign: MPUD3



Geotechnical Seabed Survey – Visible from Anderby Creek

What is happening?

This work is related to the Outer Dowsing Offshore Wind farm. Construction of the wind farm and associated onshore infrastructure will not begin until 2027 at the earliest, but ahead of the construction it is necessary to carry out various surveys to get samples of the subsurface to plan the engineering. The geotechnical jack-up rig you can see will take a small sample of the soil and rocks below the seabed which will then be analysed by our engineers to plan the underground cable installation works.

Why are you doing this?

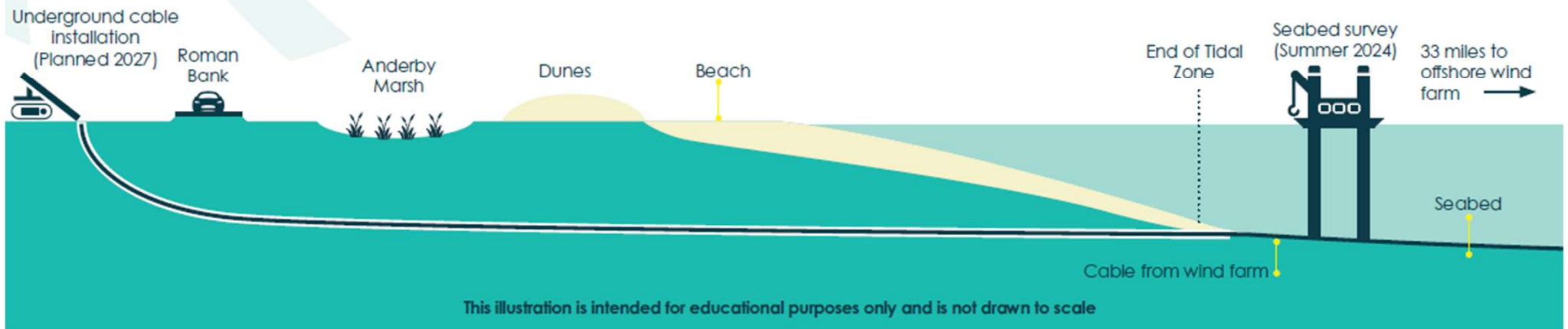
Outer Dowsing Offshore Wind is a wind farm planned to be built in the North Sea, 54km (33 miles) offshore. To avoid impacts to the beach and surrounding sensitive areas, we will bring the electrical cables ashore using horizontal directional drilling. The plan is to install the cable from a field west of the Roman Bank, under the sensitive areas until it is past the tidal zone.

How long will the survey take?

The geotechnical jack-up rig will be doing works just offshore, past the tidal zone, for a period of approximately 3 weeks from July 1st. The beach will remain open and there will be no works on the beach.

Keeping safe

During operations it is important that we keep everyone safe. Please therefore refrain from approaching the vessel or interacting with it, or the crew, in any way so that they can complete their works safely and to schedule.



Onshore geophysical investigations – Completed



Onshore engineering and archaeology boreholes and trial trenches



A photograph showing two men in a community setting. The man on the left is wearing a dark blue jacket with the 'Outer Dowsing Offshore Wind' logo on the chest. He is leaning over a table, looking at a large map or document. The man on the right is older, with white hair and a beard, wearing a green quilted jacket. He is also looking at the map. In the background, there are red curtains and a wooden bench. The overall scene suggests a community consultation or information session.

Outer Dowsing in the community

Inspiring the young engineers of the future



FREE EVENT

FUTURE FEST 2024

THE CAREERS EVENT FOR SOUTH & EAST LINCOLNSHIRE

Thursday 4th July 2024 - 9am to 3pm

Boston College Peter Paine Performance Centre,
Roseberry Avenue, Boston PE21 7QR

<p style="font-weight: bold; color: #4CAF50;">FOR SECONDARY SCHOOLS</p> <p>Your students will meet employers and education and training providers to research and learn about a wide variety of careers opportunities, helping them to make those important decisions ready for life after leaving school.</p>	<p style="font-weight: bold; color: #4CAF50;">FOR EMPLOYERS</p> <p>Promote your organisation and attract the next generation of your workforce by engaging with young people who are looking to plan their next steps ready for their future careers.</p>	<p style="font-weight: bold; color: #4CAF50;">FOR EDUCATION & TRAINING PROVIDERS</p> <p>Showcase the high quality education and qualifications you offer to support and develop skills and future careers.</p>
--	---	--

DISCOVERY ZONES WILL PROMOTE CAREER IDEAS IN:

Agriculture • Animal Care • Arts • Business & Finance • Construction • Digital & Media
Education • Energy • Engineering • Food • Manufacturing • Health & Social Care
Horticulture • Hospitality & Leisure • Medical • Public Services • Retail • Sport
Transport & Logistics and more

For enquiries and bookings email liz.king@boston.gov.uk or call 07825 009542

This free event has been organised by the South & East Lincolnshire Councils Partnership for schools, employers and training providers situated in or serving the authority areas of Boston Borough, East Lindsey and South Holland District Councils.

South & East Lincolnshire Councils Partnership

The Lincolnshire Show



Investing in the UK

We will work to Maximize investment in the UK supply chain and create skilled jobs

- Over **£2billion** estimated investment in the UK
- Over **1000 UK-based** skilled jobs during construction
- Over **400 UK-based** skilled jobs during operations for 35 years
- **STEM program** launched to inspire next generation of engineers
- **Community Benefit Fund** to launch after FC

